

PART OF THE SW 1/4 OF SECTION 5, THE NE 1/4 OF SECTION 7,
AND THE NW 1/4 OF SECTION 8, ALL IN T.6N., R.2E., S.L.B. & M.

MIDDLE FORK MEADOWS SUB PHASE 1

TAXING UNIT: 318

IN WEBER COUNTY

SCALE 1" = 200'

SEE PAGE 3

SEE PAGE 6

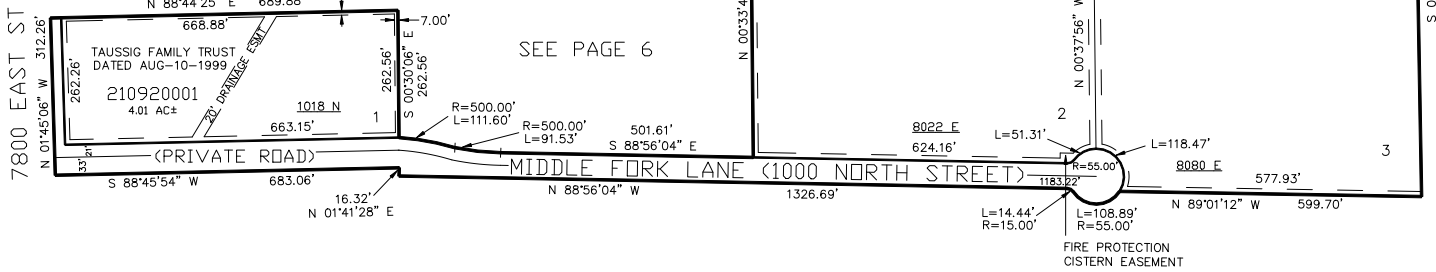
SEE PAGE 10

SEE PAGE 6

SEE PAGE 10

SEE PAGE 62

7800 EAST ST



SEE PAGE 62

SEE PAGE 10

10' UTILITY & DRAINAGE EASEMENTS EACH
SIDE OF PROPERTY LINES AS INDICATED
BY DASHED LINES EXCEPT AS OTHERWISE
SHOWN.

FOR COMPLETE ENG DATA SEE
ORIGINAL DEDICATION PLAT IN
BOOK 52, PAGE 48 OF RECORDS.